

MATSUE DAN-DAN Map

Tamatsukuri Area

松江だんだんマップ
玉造エリア

* Dan-dan means "thank you."

Japan.
Endless
Discovery.



Tamatsukuri hot Spring



Yuyakushi Park



Footbath

Production and publication by
Chugoku District Transport Bureau, Matsue City

リサイクル適性
This publication can be recycled into printing paper.

2013.03

Tamatsukuri Onsen

玉造温泉とは

Tamatsukuri Onsen contains water that is good for women's skin and so it is known as "Himekami no Yu" (hot water for princesses). It is a well-known hot spring that is a representative of Shimane Prefecture. In ancient times, it was possible to obtain high-quality blue agate from Kasen Mountain on the east side of the spa town and so the area was popular for making jewels. This is the origin of the name "Tamatsukuri."



that is a representative of Shimane Prefecture.

Yuyakushi Square

At Yuyakushi Square, you can collect the hot water that springs up from under Magatama in bottles (for a charge) and take it home.

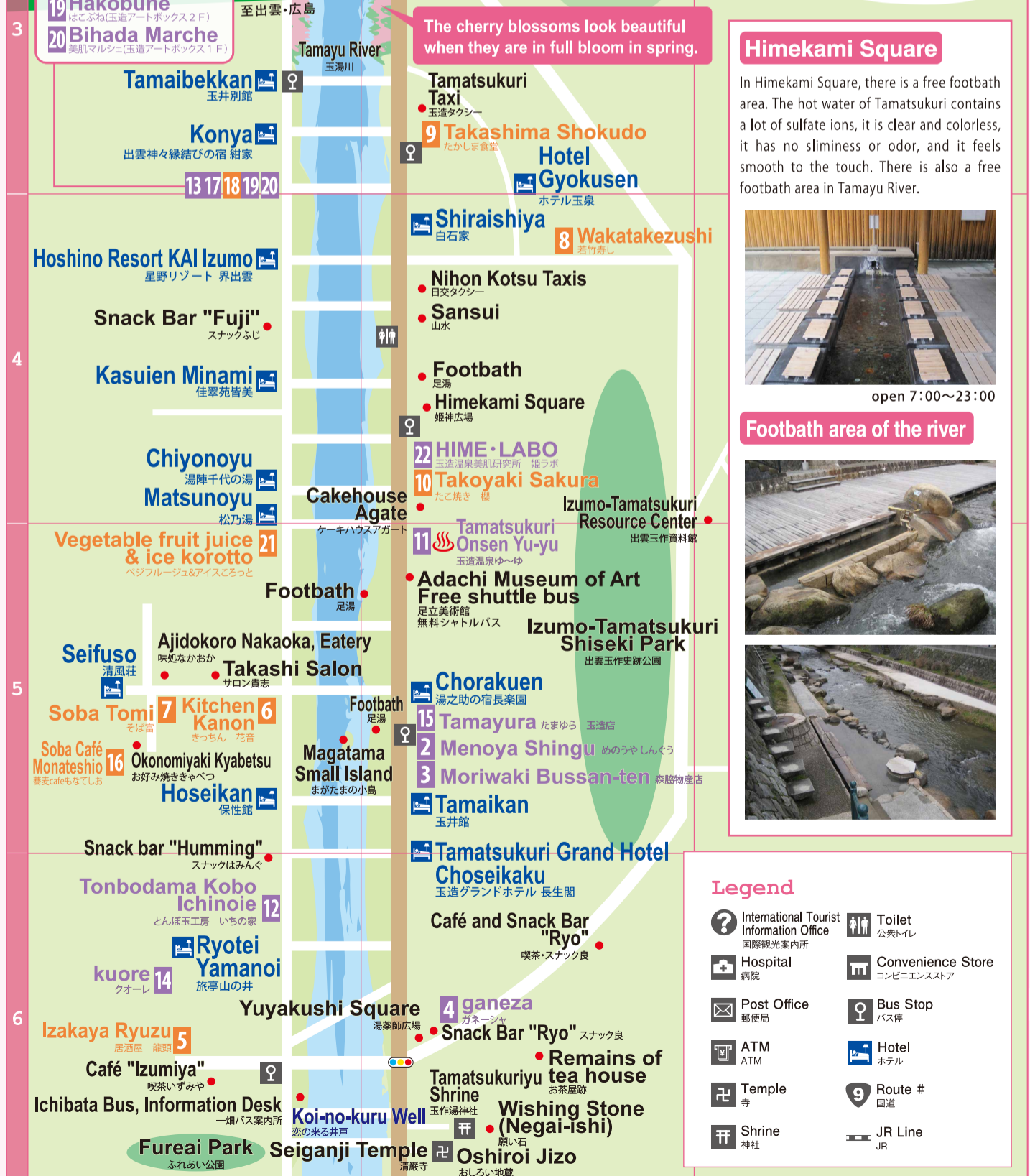
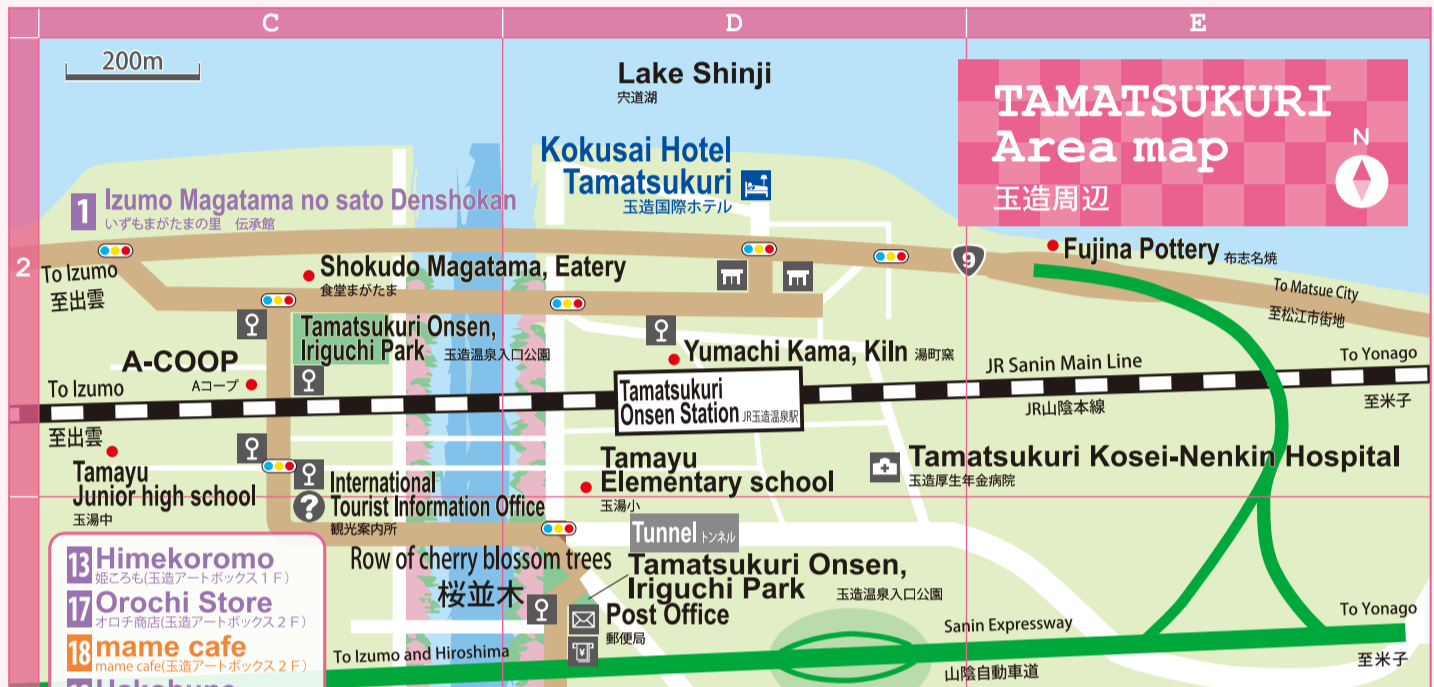


How to worship at Tamatsukuri Shrine

玉作湯神社の参拝のしかた

MAP D-6

- 1 Receive a Kanai-ishi (granting stone) from the shrine office.
- 2 Clean your mouth and both hands at the water-filled basin (chozuya) of the shrine.
- 3 First, give your greetings in the hall of worship (haiden).
- 4 Clean the Kanai-ishi (granting stone) with water and hold it against the Negai-ishi (wishing stone).
- 5 Write what you wish for, your address and your name on the wish slip (it will make two copies) in the hall of worship (Haiden). Place one copy with the Kanai-ishi (granting stone) in the drawstring bag and place the other copy in the shrine's box.
- 6 Put in your monetary offering, bow twice, clap twice, and then bow once.



Himekami Square
In Himekami Square, there is a free footbath area. The hot water of Tamatsukuri contains a lot of sulfate ions, it is clear and colorless, it has no sliminess or odor, and it feels smooth to the touch. There is also a free footbath area in Tamayu River.



Footbath area of the river



Footbath area of the river

- Legend**
- International Tourist Information Office
 - Hospital
 - Post Office
 - ATM
 - Temple
 - Shrine
 - Toilet
 - Convenience Store
 - Bus Stop
 - Hotel
 - Route #
 - JR Line

Shop List

- How to interpret the marks**
- V** Vegetarian
 - V** Vegetarian (prior booking required)
 - A** Allergy-free
 - A** Allergy-free (prior booking required)
 - MAP** Map information
 - Address**
 - Open hours and holidays**
 - Budget**
 - Cards available**



Shops displaying this mark welcome visitors from overseas.



Stones and semiprecious stones MAP C-2

1 Izumo Magatama no Sato Denshoukan
いずまがたまの里 伝承館



Magatama Jewelry making ¥800
Accessory making (Depends on the material cost)
As its name suggests, Tamatsukuri was an area where ball-type items such as jewels were produced. The appeal of jewels with a mysterious power and their manufacturing techniques have been handed down to establishments such as jewel museums and workshops where craftsmen demonstrate how to craft agate.

🏠 1755-1 Tamayuchu Yumachi, Matsue City
🕒 8:00-17:30 Closed: Open 7 days a week
💰 One item from ¥500
📱 VISA / MasterCard / JCB

Agate products MAP D-5

2 Menoya Shingu
めのうやしんぐ



Agate Magatama jewels ¥2,000~
Straps and pendants
Agate Magatama jewels ¥3,000~
Bracelets

This agate shop has been in business for 111 years and they are the original producers of Magatama jewels.

🏠 325 Tamayuchu Tamatsukuri, Matsue City
🕒 8:30-18:00 Closed: Sundays
💰 —
📱 VISA / JCB

Gift shop MAP D-5

3 Moriwaki Bussan-ten
森脇物産店



Yuzen origami ¥470
Origami where a Yuzen pattern is added to Japanese paper.

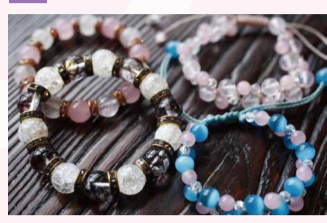
Agate workshop
This has been prized since olden times as an auspicious item.

This shop sells local handicrafts such as crafted agate and Japanese paper.

🏠 327 Tamayuchu Tamatsukuri, Matsue City
🕒 8:30-21:00 Closed: None
💰 —
📱 Not accepted

Sundries and clothes MAP D-6

4 ganeza
ganeza (ガネーシャ)



Chibi-tan, deka-tan ¥1,000~¥1,300
Original item made from power stones.

This shop sells items brought to Japan from all over Asia and power stones.

🏠 500-2 Tamayuchu Tamatsukuri, Matsue City
🕒 10:00-19:00 Closed: Tuesdays
💰 —
📱 Not accepted

Japanese bar MAP C-6

5 Izakaya Ryuzu
居酒屋 龍頭



Ramen ¥500
Enjoy the light taste of chicken soup.
White squid sashimi ¥700
This is soft and sweet squid.

Many local people come to this bar.

🏠 1035 Tamayuchu Tamatsukuri, Matsue City
🕒 Lunch 11:30-13:00 / Dinner 17:30-24:00 (Sun. and National Holidays 17:30-24:00) / Closed: Irregular holidays
💰 Set meal (daily special) ¥650~ / Fried shrimp set meal ¥1,300~
📱 Not accepted

Wagyu (Japanese cattle) steak from Shimane MAP C-5

6 Kitchen Kanon
キッチン 花音(かのん)



Kanon lunch ¥1,200
Japanese-style mini lunch that uses seasonal ingredients and is served on a tray.

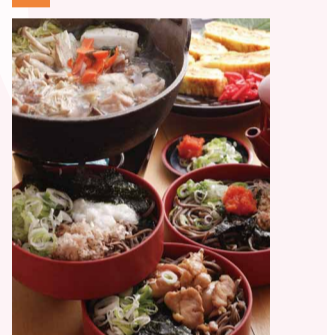
Steak set meal using Wagyu (Japanese beef) from Shimane ¥1,980~
An A4-rank Shimane Wagyu (Japanese beef) served with our homemade Japanese-style sauce.

This restaurant serves cuisine with the emphasis on local and handmade produce.

🏠 1197-2 Tamayuchu Tamatsukuri, Matsue City
🕒 Lunch 11:30-14:00 / Dinner 17:00-21:45 Closed: No fixed holidays
💰 Lunch ¥1,200~ / Dinner ¥1,380~
📱 Not accepted

Japanese bar and handmade soba MAP C-5

7 Soba Tomi
そば富



Bowl of rice topped with sashimi ¥700
Fresh seafood is placed on top of rice.

Soba served in a box ¥650
It is handmade. Three pieces for one person.

🏠 1197-7 Tamayuchu Tamatsukuri, Matsue City
🕒 Lunch 11:00-14:00 / Dinner 17:00-24:00 Closed: No fixed holidays
💰 ¥500~
📱 Not accepted

Sushi MAP D-4

8 Wakatakezushi
若竹寿し



Special high-quality nigirizushi ¥2,100
Assortment of nine pieces of sushi made from ingredients centering on fresh local fish.
Bowl of rice topped with sashimi ¥1,575
Bowl of rice topped with sashimi containing 10 types of fish and seafood.

Founded in 1955, this shop sells local cuisine, such as Matsuba crab and blackthroat seaperch from the Sanin Region. Enjoy the sake of Shimane.

🏠 83-6 Tamayuchu Tamatsukuri, Matsue City
🕒 Lunch 11:00-14:00 Dinner 17:30-23:00
💰 Lunch ¥1,260~ / Dinner ¥2,000~
📱 Not accepted

Japanese bar style restaurant MAP D-3

9 Takashima Shokudo
たかしま食堂



Salty ramen, soy sauce ramen ¥630
Enjoy the light taste of soup based on chicken.

Gyoza ¥500
The taste has not changed since this bar's establishment.

Bar with a homely atmosphere where the seats are mainly zashiki (Japanese) style.

🏠 40 Tamayuchu Tamatsukuri, Matsue City
🕒 18:00-24:00 Closed: Wednesdays
💰 —
📱 Not accepted

Takoyaki shop MAP D-4

10 Takoyaki Sakura
たこ焼き 櫻



Tarutako made with tartar sauce 6 pieces, ¥450

Discounts in free papers can be used here.

🏠 46-4 Tamayuchu Tamatsukuri, Matsue City
🕒 12:00-24:00 Sun. 17:30-24:00 Closed: Wednesdays
💰 Lunch ¥500~ / Dinner ¥1,000~
📱 Not accepted

Day-trip bathing facilities MAP D-5

11 Tamatsukuri Onsen Yu-yu
玉造温泉ゆ〜ゆ



The motif of Magatama jewels gives this facility an impressive external appearance. Immerse your whole body in this hot spring that can give you beautiful skin.

🏠 255 Tamayuchu Tamatsukuri, Matsue City
🕒 10:00-22:00 (last reception at 21:20) / Closed: Mondays (open if Monday is a national holiday, and closed the following day)
💰 Adults (Junior high school students and older): ¥400; children (3 or older): ¥200
📱 Not accepted

Glass craftwork MAP C-6

12 Tonbodama kobo Ichinoie
とんぼ玉工房 いちの家



Romance strap ¥1,150
It uses colors decided by feng shui and it combines fortune with romance.

Floral strap ¥1,840
A floral strap that incorporates fine craftsmanship.

Glass bead accessories that are handmade one by one.

🏠 1045 Tamayuchu Tamatsukuri, Matsue City
🕒 10:00-19:00 Closed: Irregular holidays
💰 ¥2,000~
📱 Not accepted

Yukata rental MAP C-3

13 Himekoromo
(Tamatsukuri Art Box 1F)
姫ころも (玉造アートボックス1F)



Yukata ¥1,890

Here you can rent yukata (informal summer robe), parasols and umbrellas, deposit your luggage and obtain tourist information.

🏠 1241 Tamayuchu Tamatsukuri, Matsue City
🕒 10:00-19:00 Closed: Irregular holidays
💰 —
📱 —

Manufacturer and seller of leather goods MAP C-6

14 kuore
kuore (クオーレ)



Strap ¥800
Strap with an inscription of four leaves, stars, hearts and jewels.

Octagonal mirror key ring ¥2,000
The key ring has an inscription and there is an octagonal mirror inside.

This store is housed in a converted old building, where you can enjoy the smell of wood and leather.

🏠 1034-4 Tamayuchu Tamatsukuri, Matsue City
🕒 10:00-20:00 Closed: Tuesdays
💰 —
📱 VISA / MasterCard / Diners Club / JCB / American Express / DISCOVER

Seller of genuine stone accessories MAP D-5

15 Tamayura
たまゆら 玉造店



Izumo-style Magatama jewel charm ¥2,500~
This traditional charm can be fixed to a bag, purse, pouch, or mobile phone.

Gemstone bracelet ¥3,000~
This item has been handmade by connecting colorful natural stones.

The interior has a Japanese atmosphere and it sells many colorful power stones and miscellaneous goods. It also sells jewels that have been used as charms since ancient times.

🏠 324-1 Tamayuchu Tamatsukuri, Matsue City
🕒 9:00-18:00 Closed: None
💰 —
📱 VISA / MasterCard / Diners Club / JCB / American Express / DISCOVER

Soba restaurant MAP C-5

16 Soba Café Monateshio
蕎麦caféもなてしお



Soba served in a box ¥750

The most popular way to eat Izumo soba is to eat it from a box like this.

A creative dish that combines minced chicken with soba.

This cafe mainly uses ingredients from Shimane Prefecture, and also has Izumo soba, Sosaku soba, drinks and desserts. It also sells handmade candles. Please feel free to stop by.

🏠 2034 Tamayuchu Tamatsukuri, Matsue City
🕒 Lunch 11:00-15:00 / Dinner 17:00-20:00 Closed: Every Thursday, and first and third Wednesdays of the month
💰 Lunch ¥750~ / Dinner ¥750~
📱 Not accepted

Shop MAP C-3

17 Orochi Store
(Tamatsukuri Art Box 2F)
オロチ商店 (玉造アートボックス2F)



Orochi jeans ¥8,000~

Utilizing the store's technological and developmental capabilities, their original brand "Orochi" is being sent out from the mythical country to the world.

🏠 1241 Tamayuchu Tamatsukuri, Matsue City
🕒 10:00-19:00 Closed: Mondays
💰 —
📱 —

Restaurant MAP C-3

18 mame café
(Tamatsukuri Art Box 2F)
mame cafe (玉造アートボックス2F)



Take a break in a relaxing space in this café that sells miscellaneous goods.

🏠 1241 Tamayuchu Tamatsukuri, Matsue City
🕒 9:00-19:00 Closed: Irregular holidays
💰 ¥500~
📱 —

Shop MAP C-3

19 Hakobune
(Tamatsukuri Art Box 2F)
はこぶね (玉造アートボックス2F)



Romance candle ¥315
Jeweled candle ¥315

Young creators gather in Tamatsukuri, a main production area in Matsue City, and sell and exhibit their wares.

🏠 1241 Tamayuchu Tamatsukuri, Matsue City
🕒 9:00-19:00 Closed: Irregular holidays
💰 —
📱 —

Shop selling souvenirs MAP C-3

20 Bihada Marche
(Tamatsukuri Art Box 1F)
美肌マルシェ (玉造アートボックス1F)



Lalalalaka ¥578~
This rusk made from the fibers of brown rice is great for detoxing.

This souvenir shop is based on the concept of "getting clean from the inside."

🏠 1241 Tamayuchu Tamatsukuri, Matsue City
🕒 9:00-19:00 Closed: Irregular holidays
💰 ¥578~
📱 —

Fruit juice & ice snack MAP C-5

21 Vegetable fruit juice & ice korotto
ベジフルージュ&アイスころっと



Fruit juice (vegetable fruit juice) ¥450
Orange-based fresh juice. It also includes carrot and apple, and it is very easy to drink.

Gotochi Korotto (ice snack) ¥500
Original sauce that uses seasonal products from Shimane Prefecture.

Enjoy fresh juice and the deliciousness of locally produced vegetable-fruit juice made from seasonal products and produced by a vegetable sommelier. The ice snacks let you enjoy various textures, and are a mysterious ice treat.

🏠 1213 Tamayuchu Tamatsukuri, Matsue City
🕒 10:00-18:00 Closed: Irregular holidays
💰 ¥500~
📱 Not accepted

Beauty & cosmetics MAP D-4

22 Tamatsukuri-onsen Skin Research Lab HIME-LABO
玉造温泉美肌研究所 姫ラボ



Hime labo soap ¥1,500
This soap is characterized by the very fluffy foam it produces which gently wraps your skin and thoroughly gets rid of dirt.

Hime labo gel ¥2,500
All-in-one gel that combines a lotion and toner. You can replenish your skin's moisture and oil at the same time.

🏠 46-4 Tamayuchu Tamatsukuri, Matsue City
🕒 8:30-21:30 Closed: Irregular holidays
💰 —
📱 VISA / JCB / WAON